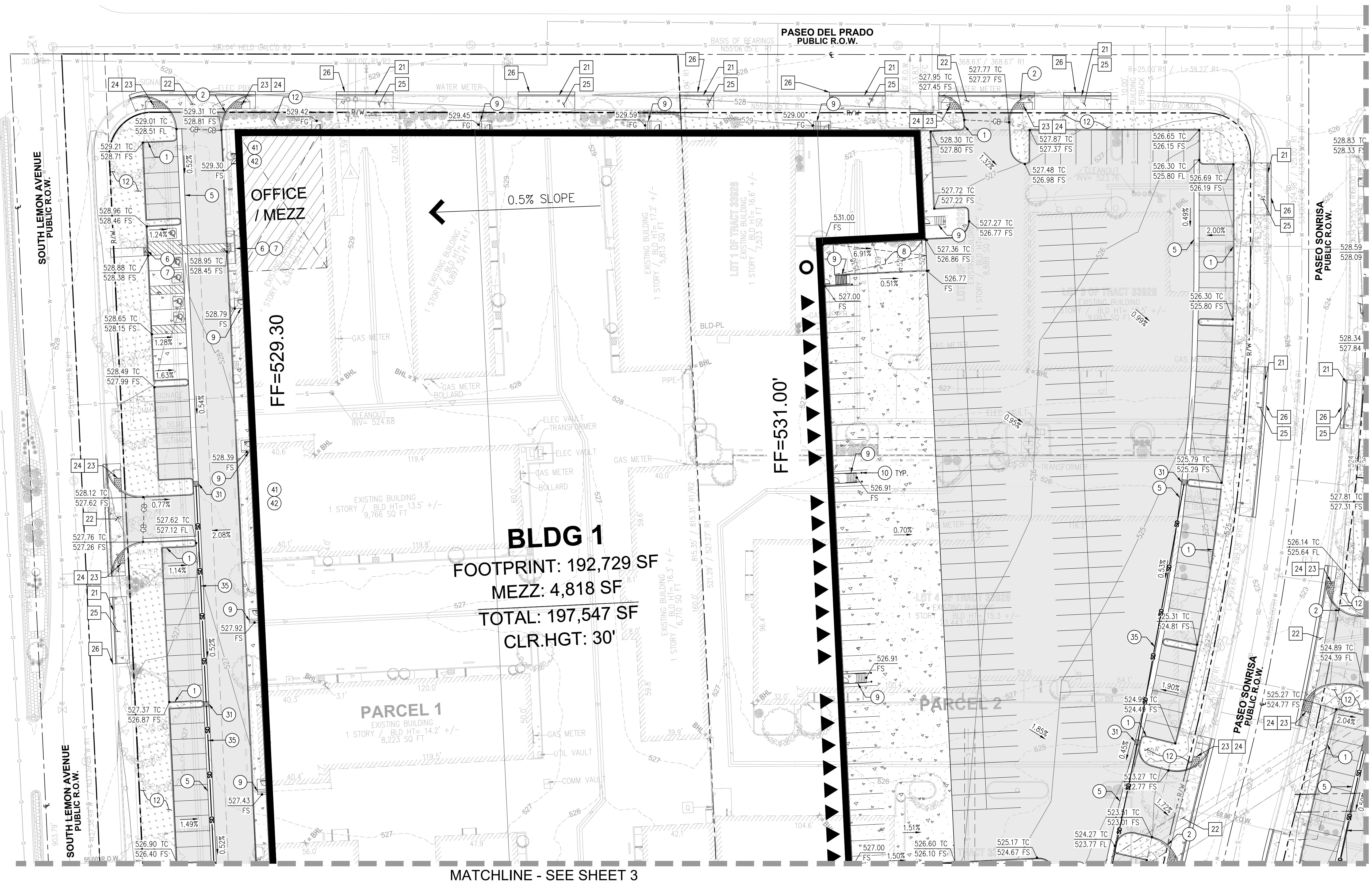


S:\2022\22-136 WALNUT BUSINESS PARK\CIVIL\DWG\PRELIMINARY IMPROVEMENT PLANS\22-136 2 PRELIMINARY GRADING & DRAINAGE PLANS.DWG - PLOT DATE: June 16, 2023



CONSTRUCTION NOTES

- 1 CONSTRUCT 6" CURB, TYPE A1-6 PER SPPWC STD. PLAN 120-2.
- 2 CONSTRUCT 8" CURB, TYPE A1-8 PER SPPWC STD. PLAN 120-2.
- 3 CONSTRUCT 6" CURB AND GUTTER, TYPE A2-6 PER SPPWC STD. PLAN 120-2.
- 4 CONSTRUCT 8" CURB AND GUTTER, TYPE A2-8 PER SPPWC STD. PLAN 120-2.
- 5 CONSTRUCT 36" WIDE RIBBON GUTTER.
- 6 CONSTRUCT CURB RAMP, PER SPPWC STD. PLAN 111-5.
- 7 INSTALL TRUNCATED DOMES.
- 8 CONSTRUCT ADA ACCESSIBLE RAMP WITH HANDRAILS.
- 9 CONSTRUCT CONCRETE STAIRS PER ARCHITECTURAL PLAN.
- 10 INSTALL BOLLARDS.
- 11 INSTALL CONCRETE WHEEL STOP.
- 12 INSTALL LANDSCAPING PER LANDSCAPE PLAN.

CONSTRUCTION NOTES - OFFSITE

- 20 CONSTRUCT 8" CURB, TYPE A1-8 PER SPPWC STD. PLAN 120-2.
- 21 CONSTRUCT 8" CURB AND GUTTER, TYPE A2-8 PER SPPWC STD. PLAN 120-2.
- 22 CONSTRUCT DRIVEWAY APPROACH, PER SPPWC STD. PLAN 110-2, TYPE C.
- 23 CONSTRUCT CURB RAMP, PER SPPWC STD. PLAN 111-5.
- 24 INSTALL TRUNCATED DOMES.
- 25 REMOVE EXISTING SIDEWALK AND DRIVEWAY, CONSTRUCT SIDEWALK PER PER SPPWC STD. PLAN 113-2.
- 26 SAWCUT FULL DEPTH AND REPLACE EXISTING PAVEMENT IN-KIND.

DRAINAGE CONSTRUCTION NOTES

- 31 INSTALL 24" X 24" PRECAST CATCHBASIN WITH TRAFFIC RATED GRATE.
- 32 INSTALL 36" X 36" PRECAST CATCHBASIN WITH TRAFFIC RATED GRATE.
- 33 INSTALL 48" PRECAST STORM DRAIN MANHOLE.
- 34 INSTALL 48" PRECAST STORM DRAIN MANHOLE WITH SUMP PUMPS.
- 35 INSTALL 12" PVC STORM DRAIN PIPE.
- 36 INSTALL 18" PVC STORM DRAIN PIPE.
- 37 INSTALL 24" PVC STORM DRAIN PIPE.
- 38 INSTALL UNDERGROUND DETENTION SYSTEM BY STORMTECH.
- 39 INSTALL UNDERGROUND MODULAR WETLAND SYSTEM.
- 40 PARKWAY CULVERT "TYPE-B" PER CITY STD. PLAN. NO. 319, WITH CASE II INLET.
- 41 4" BUILDING ROOF DRAIN, SEE PLUMBING PLAN FOR CONTINUATION.
- 42 4" BUILDING ROOF DRAIN OVERFLOW, OUTLET 6" ABOVE FINISHED GRADE.
- 43 INSTALL 2" PVC FORCEMAIN.

BLDG 1
 FOOTPRINT: 192,729 SF
 MEZZ: 4,818 SF
 TOTAL: 197,547 SF
 CLR.HGT: 30'

FF=529.30

FF=531.00'

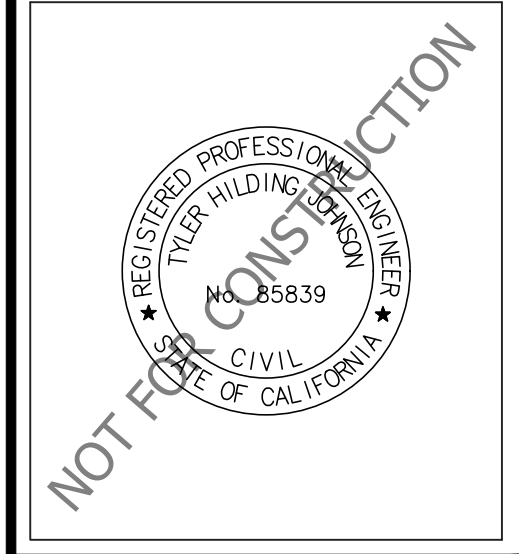
MATCHLINE - SEE SHEET 3

MATCHLINE - SEE SHEET 4

WALNUT BUSINESS PARK
 CITY OF WALNUT
 COUNTY OF LOS ANGELES
 PRELIMINARY
 GRADING & DRAINAGE PLAN - 1

PROJECT NUMBER: 22-136
PREPARED ON:
REVISED ON: 6/16/23
PREPARED BY: GMH
CHECKED BY: THJ
SHEET 2 OF 12

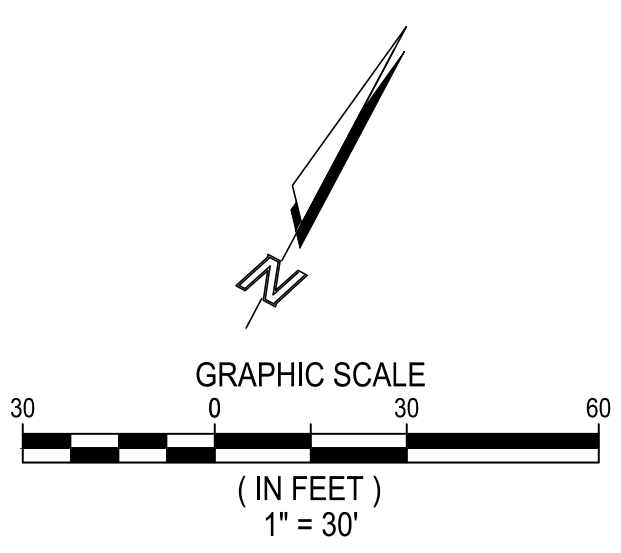
DATE	BY	REVISIONS



ATLAS CIVIL DESIGN

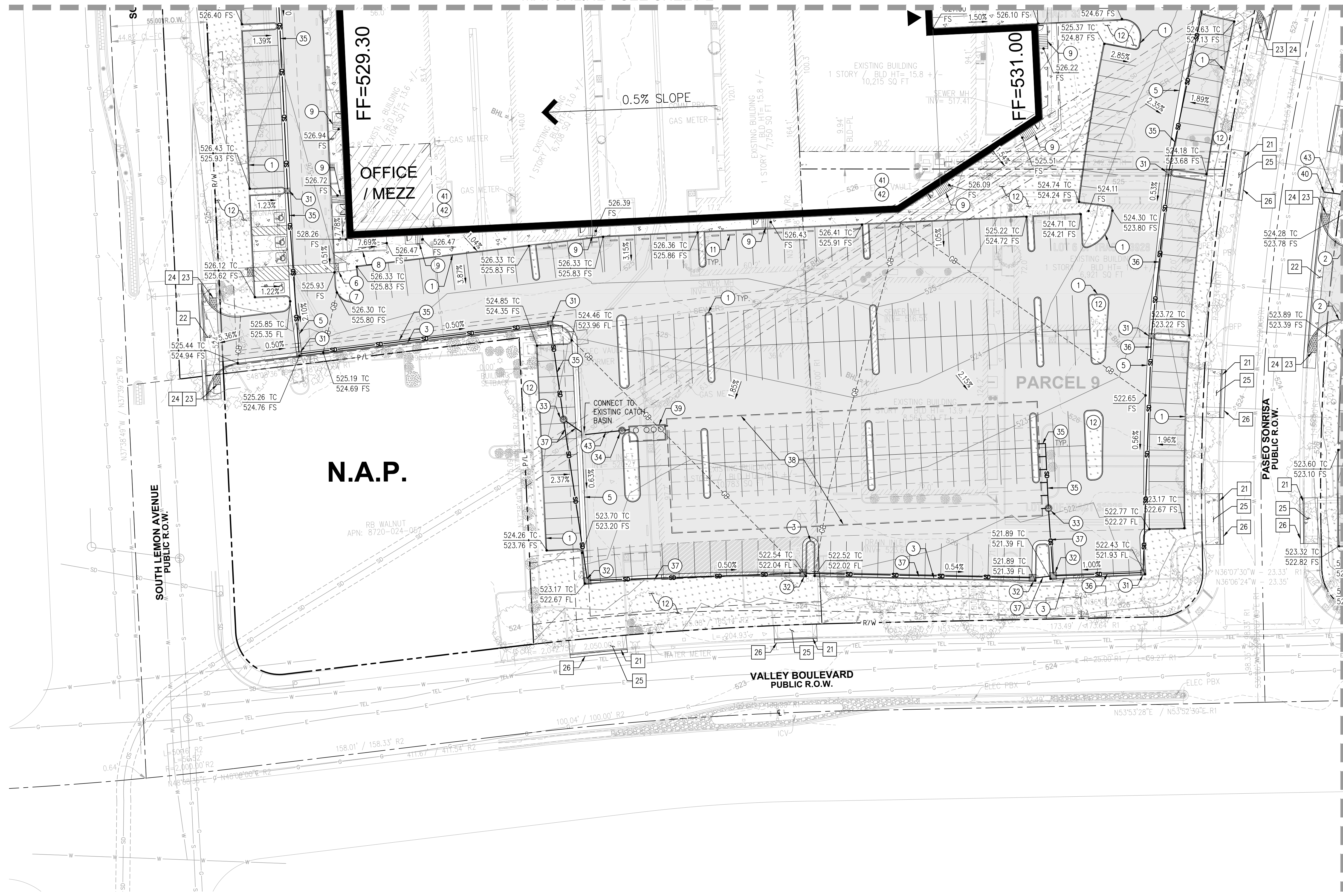
Civil Engineering • Site Optimization
 www.AtlasCivilDesign.com
 Tel: 1-213-810-8470

San Diego • Orange County • Los Angeles • San Luis Obispo • Monterey



THE CONTRACTOR SHALL VERIFY AND BE RESPONSIBLE FOR ALL DIMENSIONS. DO NOT SCALE THE DRAWING - ANY ERRORS OR OMISSIONS SHALL BE REPORTED TO ATLAS CIVIL DESIGN WITHOUT DELAY. THE COPYRIGHTS TO ALL DESIGNS AND DRAWINGS ARE THE PROPERTY OF ATLAS CIVIL DESIGN. REPRODUCTION OR USE FOR ANY PURPOSE OTHER THAN THAT AUTHORIZED BY ATLAS CIVIL DESIGN IS FORBIDDEN.

MATCHLINE - SEE SHEET 2



N.A.P.

FF=529.30

FF=531.00

0.5% SLOPE

MATCHLINE - SEE SHEET 5

CONSTRUCTION NOTES

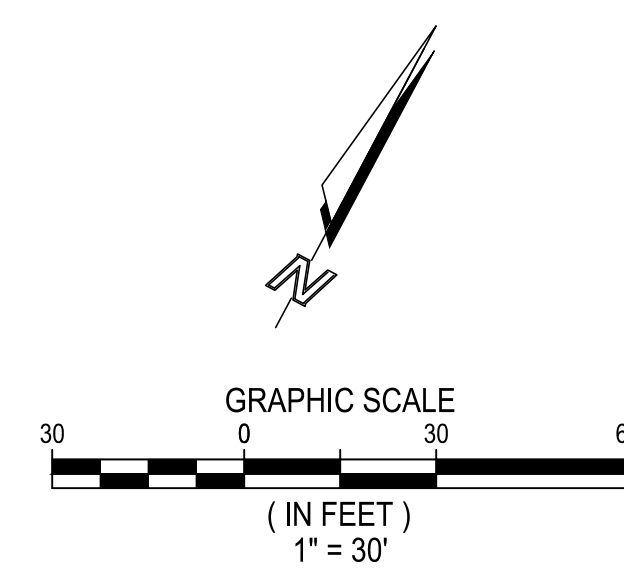
- 1 CONSTRUCT 6" CURB, TYPE A1-6 PER SPPWC STD. PLAN 120-2.
- 2 CONSTRUCT 8" CURB, TYPE A1-8 PER SPPWC STD. PLAN 120-2.
- 3 CONSTRUCT 6" CURB AND GUTTER, TYPE A2-6 PER SPPWC STD. PLAN 120-2.
- 4 CONSTRUCT 8" CURB AND GUTTER, TYPE A2-8 PER SPPWC STD. PLAN 120-2.
- 5 CONSTRUCT 36" WIDE RIBBON GUTTER.
- 6 CONSTRUCT CURB RAMP, PER SPPWC STD. PLAN 111-5.
- 7 INSTALL TRUNCATED DOMES.
- 8 CONSTRUCT ADA ACCESSIBLE RAMP WITH HANDRAILS.
- 9 CONSTRUCT CONCRETE STAIRS PER ARCHITECTURAL PLAN.
- 10 INSTALL BOLLARDS.
- 11 INSTALL CONCRETE WHEEL STOP.
- 12 INSTALL LANDSCAPING PER LANDSCAPE PLAN.

CONSTRUCTION NOTES - OFFSITE

- 20 CONSTRUCT 8" CURB, TYPE A1-8 PER SPPWC STD. PLAN 120-2.
- 21 CONSTRUCT 8" CURB AND GUTTER, TYPE A2-8 PER SPPWC STD. PLAN 120-2.
- 22 CONSTRUCT DRIVEWAY APPROACH, PER SPPWC STD. PLAN 110-2, TYPE C.
- 23 CONSTRUCT CURB RAMP, PER SPPWC STD. PLAN 111-5.
- 24 INSTALL TRUNCATED DOMES.
- 25 REMOVE EXISTING SIDEWALK AND DRIVEWAY. CONSTRUCT SIDEWALK PER PER SPPWC STD. PLAN 113-2.
- 26 SAWCUT FULL DEPTH AND REPLACE EXISTING PAVEMENT IN-KIND.

DRAINAGE CONSTRUCTION NOTES

- 31 INSTALL 24" X 24" PRECAST CATCHBASIN WITH TRAFFIC RATED GRATE.
- 32 INSTALL 36" X 36" PRECAST CATCHBASIN WITH TRAFFIC RATED GRATE.
- 33 INSTALL 48" PRECAST STORM DRAIN MANHOLE.
- 34 INSTALL 48" PRECAST STORM DRAIN MANHOLE WITH SUMP PUMPS.
- 35 INSTALL 12" PVC STORM DRAIN PIPE.
- 36 INSTALL 18" PVC STORM DRAIN PIPE.
- 37 INSTALL 24" PVC STORM DRAIN PIPE.
- 38 INSTALL UNDERGROUND DETENTION SYSTEM BY STORMTECH.
- 39 INSTALL UNDERGROUND MODULAR WETLAND SYSTEM.
- 40 PARKWAY CULVERT "TYPE-B" PER CITY STD. PLAN. NO. 319, WITH CASE II INLET.
- 41 4" BUILDING ROOF DRAIN, SEE PLUMBING PLAN FOR CONTINUATION.
- 42 4" BUILDING ROOF DRAIN OVERFLOW, OUTLET 6" ABOVE FINISHED GRADE.
- 43 INSTALL 2" PVC FORCEMAIN.



S:\2022\22-136 WALNUT BUSINESS PARK\CAD\DWG\PRELIMINARY IMPROVEMENT PLANS\22-136 2 PRELIMINARY GRADING & DRAINAGE PLAN.DWG - PLOT DATE: June 16, 2023

Civil Engineering • Site Optimization
 www.AtlasCivilDesign.com
 Tel: 1-213-810-8470

San Diego • Orange County • Los Angeles • San Luis Obispo • Monterey

NOT FOR CONSTRUCTION

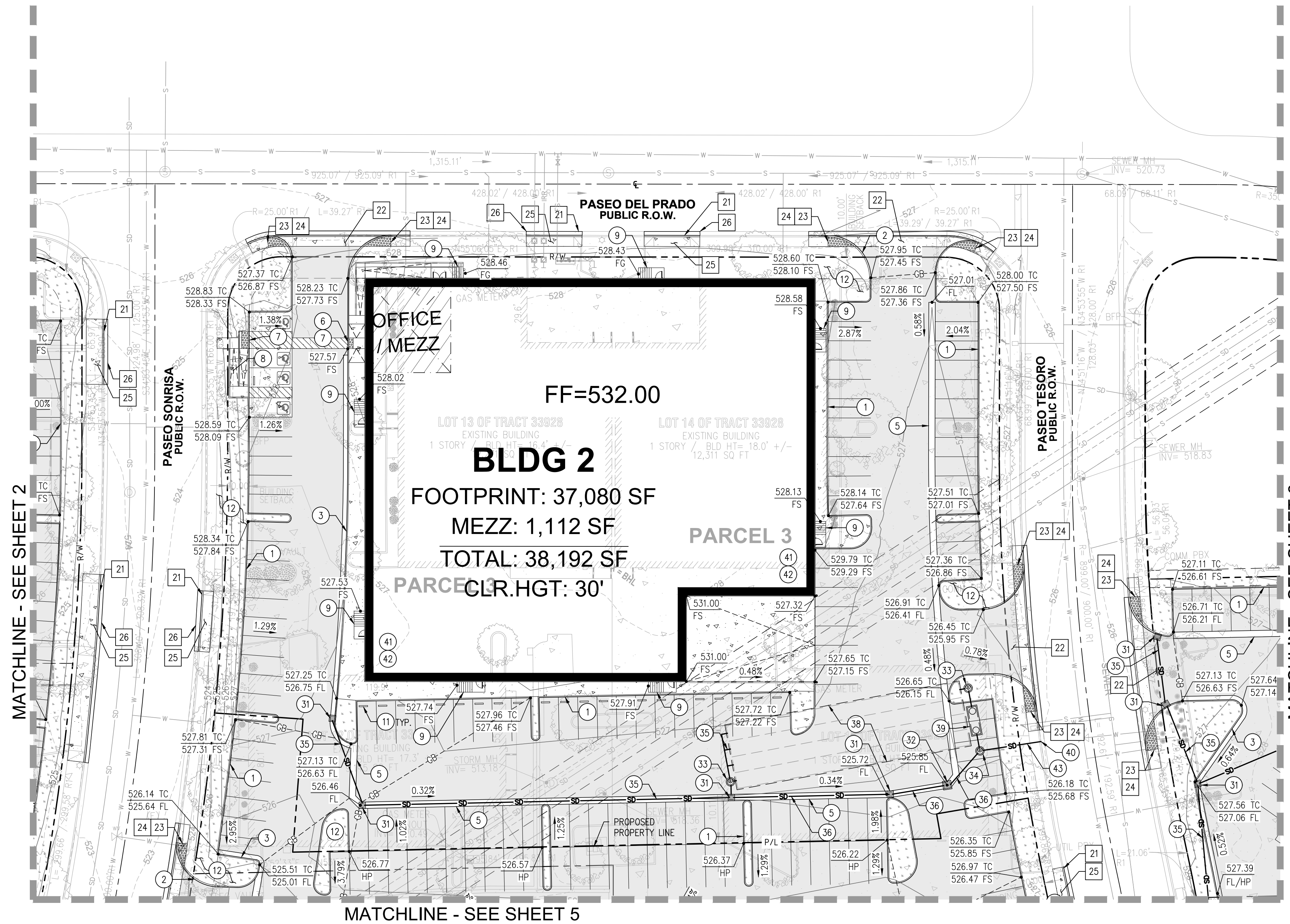
DATE	REVISIONS	BY

WALNUT BUSINESS PARK
 CITY OF WALNUT
 COUNTY OF LOS ANGELES
 PRELIMINARY
 GRADING & DRAINAGE PLAN - 2

PROJECT NUMBER: 22-136
PREPARED ON:
REVISED ON: 6/16/23
PREPARED BY: GMH
CHECKED BY: THJ
SHEET
3 OF 12

THE CONTRACTOR SHALL VERIFY AND BE RESPONSIBLE FOR ALL DIMENSIONS. DO NOT SCALE THE DRAWING - ANY ERRORS OR OMISSIONS SHALL BE REPORTED TO ATLAS CIVIL DESIGN WITHOUT DELAY. THE COPYRIGHTS TO ALL DESIGNS AND DRAWINGS ARE THE PROPERTY OF ATLAS CIVIL DESIGN. REPRODUCTION OR USE FOR ANY PURPOSE OTHER THAN THAT AUTHORIZED BY ATLAS CIVIL DESIGN IS FORBIDDEN.

3:\2022\22-136 WALNUT BUSINESS PARK\CIVIL\DWG\PRELIMINARY IMPROVEMENT PLANS\22-136 2 PRELIMINARY GRADING & DRAINAGE PLAN.DWG - PLOT DATE: June 16, 2023



MATCHLINE - SEE SHEET 2

MATCHLINE - SEE SHEET 6

MATCHLINE - SEE SHEET 5

CONSTRUCTION NOTES

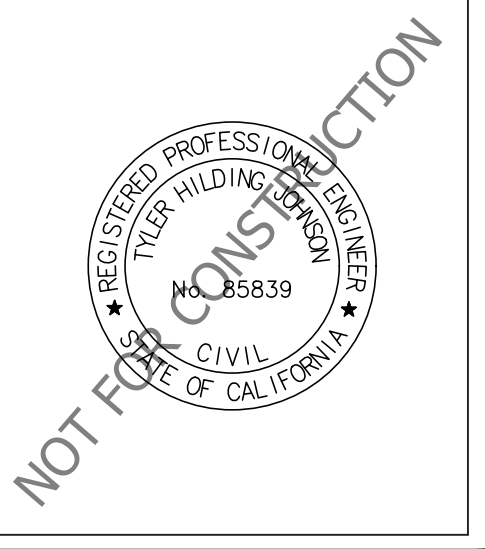
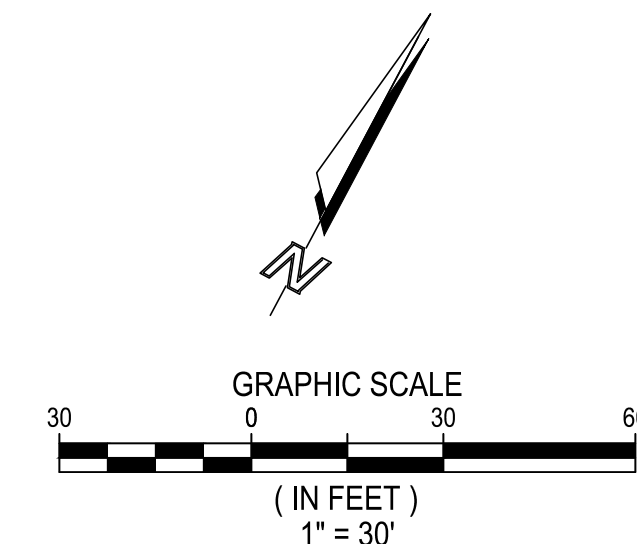
- 1 CONSTRUCT 6" CURB, TYPE A1-6 PER SPPWC STD. PLAN 120-2.
- 2 CONSTRUCT 8" CURB, TYPE A1-8 PER SPPWC STD. PLAN 120-2.
- 3 CONSTRUCT 6" CURB AND GUTTER, TYPE A2-6 PER SPPWC STD. PLAN 120-2.
- 4 CONSTRUCT 8" CURB AND GUTTER, TYPE A2-8 PER SPPWC STD. PLAN 120-2.
- 5 CONSTRUCT 36" WIDE RIBBON GUTTER.
- 6 CONSTRUCT CURB RAMP, PER SPPWC STD. PLAN 111-5.
- 7 INSTALL TRUNCATED DOMES.
- 8 CONSTRUCT ADA ACCESSIBLE RAMP WITH HANDRAILS.
- 9 CONSTRUCT CONCRETE STAIRS PER ARCHITECTURAL PLAN.
- 10 INSTALL BOLLARDS.
- 11 INSTALL CONCRETE WHEEL STOP.
- 12 INSTALL LANDSCAPING PER LANDSCAPE PLAN.

CONSTRUCTION NOTES - OFFSITE

- 20 CONSTRUCT 8" CURB, TYPE A1-8 PER SPPWC STD. PLAN 120-2.
- 21 CONSTRUCT 8" CURB AND GUTTER, TYPE A2-8 PER SPPWC STD. PLAN 120-2.
- 22 CONSTRUCT DRIVEWAY APPROACH, PER SPPWC STD. PLAN 110-2, TYPE C.
- 23 CONSTRUCT CURB RAMP, PER SPPWC STD. PLAN 111-5.
- 24 INSTALL TRUNCATED DOMES.
- 25 REMOVE EXISTING SIDEWALK AND DRIVEWAY. CONSTRUCT SIDEWALK PER PER SPPWC STD. PLAN 113-2.
- 26 SAWCUT FULL DEPTH AND REPLACE EXISTING PAVEMENT IN-KIND.

DRAINAGE CONSTRUCTION NOTES

- 31 INSTALL 24" X 24" PRECAST CATCHBASIN WITH TRAFFIC RATED GRATE.
- 32 INSTALL 36" X 36" PRECAST CATCHBASIN WITH TRAFFIC RATED GRATE.
- 33 INSTALL 48" PRECAST STORM DRAIN MANHOLE.
- 34 INSTALL 48" PRECAST STORM DRAIN MANHOLE WITH SUMP PUMPS.
- 35 INSTALL 12" PVC STORM DRAIN PIPE.
- 36 INSTALL 18" PVC STORM DRAIN PIPE.
- 37 INSTALL 24" PVC STORM DRAIN PIPE.
- 38 INSTALL UNDERGROUND DETENTION SYSTEM BY STORMTECH.
- 39 INSTALL UNDERGROUND MODULAR WETLAND SYSTEM.
- 40 PARKWAY CULVERT "TYPE-B" PER CITY STD. PLAN. NO. 319, WITH CASE II INLET.
- 41 4" BUILDING ROOF DRAIN, SEE PLUMBING PLAN FOR CONTINUATION.
- 42 4" BUILDING ROOF DRAIN OVERFLOW, OUTLET 6" ABOVE FINISHED GRADE.
- 43 INSTALL 2" PVC FORCEMAIN.



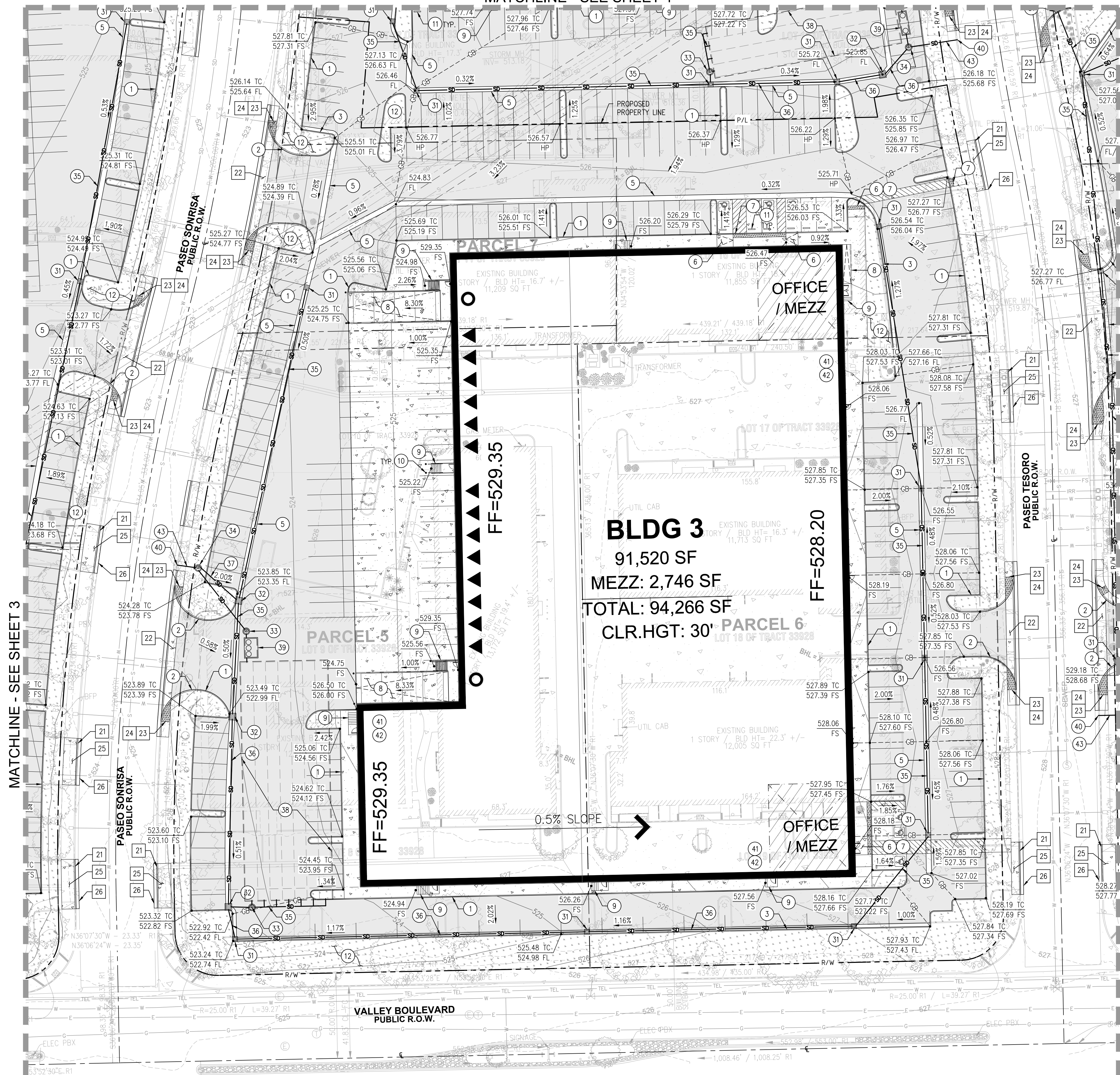
DATE	REVISIONS	BY

WALNUT BUSINESS PARK
 CITY OF WALNUT
 COUNTY OF LOS ANGELES
 PRELIMINARY
 GRADING & DRAINAGE PLAN - 3

PROJECT NUMBER: 22-136
PREPARED ON:
REVISED ON: 6/16/23
PREPARED BY: GMH
CHECKED BY: THJ
SHEET 4 OF 12

THE CONTRACTOR SHALL VERIFY AND BE RESPONSIBLE FOR ALL DIMENSIONS. DO NOT SCALE THE DRAWING - ANY ERRORS OR OMISSIONS SHALL BE REPORTED TO ATLAS CIVIL DESIGN WITHOUT DELAY. THE COPYRIGHTS TO ALL DESIGNS AND DRAWINGS ARE THE PROPERTY OF ATLAS CIVIL DESIGN. REPRODUCTION OR USE FOR ANY PURPOSE OTHER THAN THAT AUTHORIZED BY ATLAS CIVIL DESIGN IS FORBIDDEN.

MATCHLINE - SEE SHEET 4



MATCHLINE - SEE SHEET 3

MATCHLINE - SEE SHEET 7

BLDG 3
 91,520 SF
 MEZZ: 2,746 SF
 TOTAL: 94,266 SF
 CLR.HGT: 30'

FF=529.35

FF=528.20

FF=529.35

0.5% SLOPE →

CONSTRUCTION NOTES

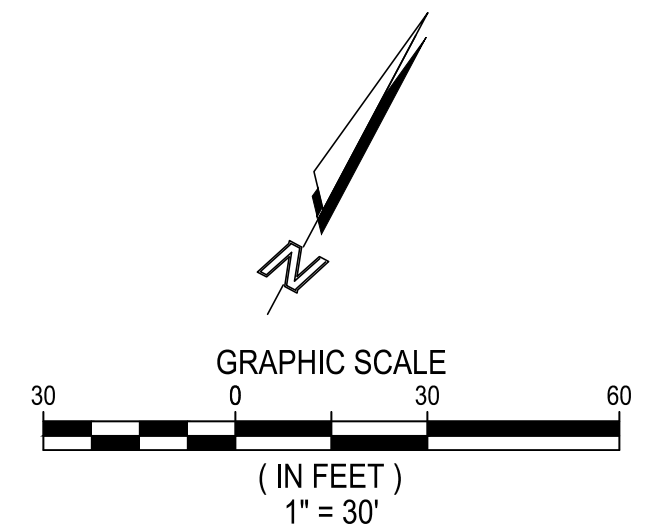
- 1 CONSTRUCT 6" CURB, TYPE A1-6 PER SPPWC STD. PLAN 120-2.
- 2 CONSTRUCT 8" CURB, TYPE A1-8 PER SPPWC STD. PLAN 120-2.
- 3 CONSTRUCT 6" CURB AND GUTTER, TYPE A2-6 PER SPPWC STD. PLAN 120-2.
- 4 CONSTRUCT 8" CURB AND GUTTER, TYPE A2-8 PER SPPWC STD. PLAN 120-2.
- 5 CONSTRUCT 36" WIDE RIBBON GUTTER.
- 6 CONSTRUCT CURB RAMP, PER SPPWC STD. PLAN 111-5.
- 7 INSTALL TRUNCATED DOMES.
- 8 CONSTRUCT ADA ACCESSIBLE RAMP WITH HANDRAILS.
- 9 CONSTRUCT CONCRETE STAIRS PER ARCHITECTURAL PLAN.
- 10 INSTALL BOLLARDS.
- 11 INSTALL CONCRETE WHEEL STOP.
- 12 INSTALL LANDSCAPING PER LANDSCAPE PLAN.

CONSTRUCTION NOTES - OFFSITE

- 20 CONSTRUCT 8" CURB, TYPE A1-8 PER SPPWC STD. PLAN 120-2.
- 21 CONSTRUCT 8" CURB AND GUTTER, TYPE A2-8 PER SPPWC STD. PLAN 120-2.
- 22 CONSTRUCT DRIVEWAY APPROACH, PER SPPWC STD. PLAN 110-2, TYPE C.
- 23 CONSTRUCT CURB RAMP, PER SPPWC STD. PLAN 111-5.
- 24 INSTALL TRUNCATED DOMES.
- 25 REMOVE EXISTING SIDEWALK AND DRIVEWAY. CONSTRUCT SIDEWALK PER PER SPPWC STD. PLAN 113-2.
- 26 SAWCUT FULL DEPTH AND REPLACE EXISTING PAVEMENT IN-KIND.

DRAINAGE CONSTRUCTION NOTES

- 31 INSTALL 24" X 24" PRECAST CATCHBASIN WITH TRAFFIC RATED GRATE.
- 32 INSTALL 36" X 36" PRECAST CATCHBASIN WITH TRAFFIC RATED GRATE.
- 33 INSTALL 48" PRECAST STORM DRAIN MANHOLE.
- 34 INSTALL 48" PRECAST STORM DRAIN MANHOLE WITH SUMP PUMPS.
- 35 INSTALL 12" PVC STORM DRAIN PIPE.
- 36 INSTALL 18" PVC STORM DRAIN PIPE.
- 37 INSTALL 24" PVC STORM DRAIN PIPE.
- 38 INSTALL UNDERGROUND DETENTION SYSTEM BY STORMTECH.
- 39 INSTALL UNDERGROUND MODULAR WETLAND SYSTEM.
- 40 PARKWAY CULVERT "TYPE-B" PER CITY STD. PLAN. NO. 319, WITH CASE II INLET.
- 41 4" BUILDING ROOF DRAIN, SEE PLUMBING PLAN FOR CONTINUATION.
- 42 4" BUILDING ROOF DRAIN OVERFLOW, OUTLET 6" ABOVE FINISHED GRADE.
- 43 INSTALL 2" PVC FORCEMAIN.



Civil Engineering • Site Optimization
 www.AtlasCivilDesign.com
 Tel: 1-213-810-8470

San Diego • Orange County • Los Angeles • San Luis Obispo • Monterey

NOT FOR CONSTRUCTION

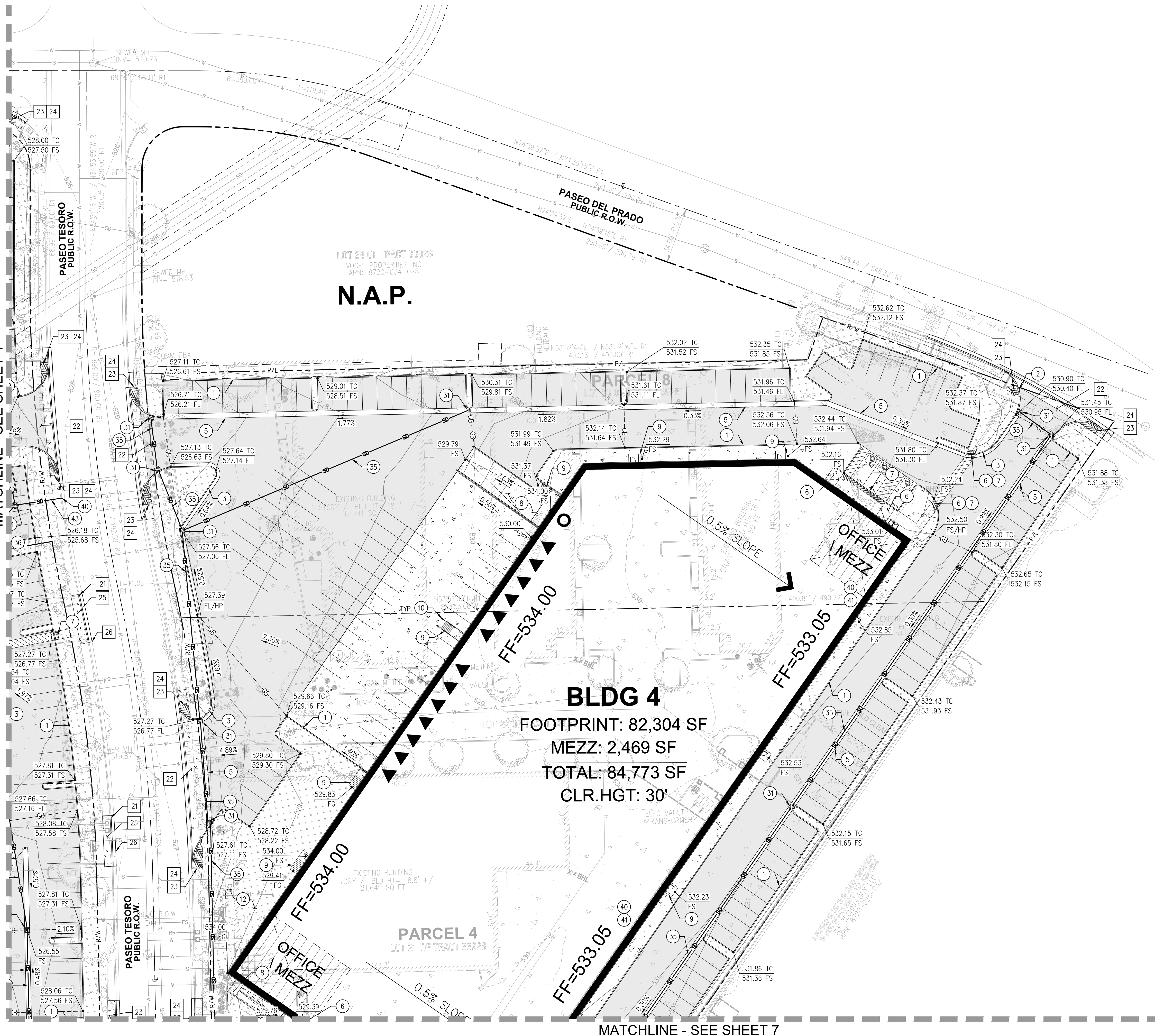
DATE	REVISIONS	BY

WALNUT BUSINESS PARK
 CITY OF WALNUT
 COUNTY OF LOS ANGELES
 PRELIMINARY
 GRADING & DRAINAGE PLAN - 4

PROJECT NUMBER: 22-136
PREPARED ON:
REVISED ON: 6/16/23
PREPARED BY: GMH
CHECKED BY: THJ
SHEET 5 OF 12

3:\2022\22-136 WALNUT BUSINESS PARK\CAD\DWG\PRELIMINARY IMPROVEMENT PLANS\22-136 2 PRELIMINARY GRADING & DRAINAGE PLANS.DWG - PLOT DATE: June 16, 2023
 THE CONTRACTOR SHALL VERIFY AND BE RESPONSIBLE FOR ALL DIMENSIONS. DO NOT SCALE THE DRAWING - ANY ERRORS OR OMISSIONS SHALL BE REPORTED TO ATLAS CIVIL DESIGN WITHOUT DELAY. THE COPYRIGHTS TO ALL DESIGNS AND DRAWINGS ARE THE PROPERTY OF ATLAS CIVIL DESIGN. REPRODUCTION OR USE FOR ANY PURPOSE OTHER THAN THAT AUTHORIZED BY ATLAS CIVIL DESIGN IS FORBIDDEN.

MATCHLINE - SEE SHEET 4



MATCHLINE - SEE SHEET 7

CONSTRUCTION NOTES

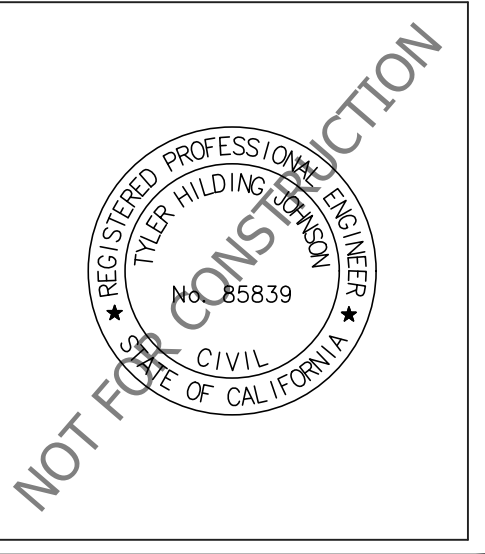
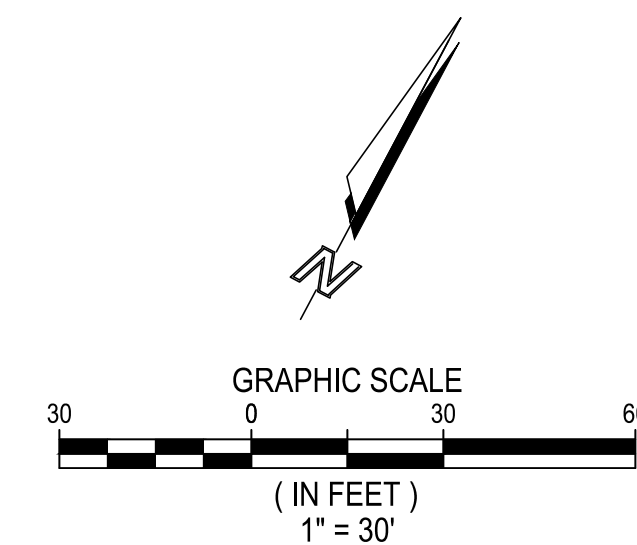
- 1 CONSTRUCT 6" CURB, TYPE A1-6 PER SPPWC STD. PLAN 120-2.
- 2 CONSTRUCT 8" CURB, TYPE A1-8 PER SPPWC STD. PLAN 120-2.
- 3 CONSTRUCT 6" CURB AND GUTTER, TYPE A2-6 PER SPPWC STD. PLAN 120-2.
- 4 CONSTRUCT 8" CURB AND GUTTER, TYPE A2-8 PER SPPWC STD. PLAN 120-2.
- 5 CONSTRUCT 36" WIDE RIBBON GUTTER.
- 6 CONSTRUCT CURB RAMP, PER SPPWC STD. PLAN 111-5.
- 7 INSTALL TRUNCATED DOMES.
- 8 CONSTRUCT ADA ACCESSIBLE RAMP WITH HANDRAILS.
- 9 CONSTRUCT CONCRETE STAIRS PER ARCHITECTURAL PLAN.
- 10 INSTALL BOLLARDS.
- 11 INSTALL CONCRETE WHEEL STOP.
- 12 INSTALL LANDSCAPING PER LANDSCAPE PLAN.

CONSTRUCTION NOTES - OFFSITE

- 20 CONSTRUCT 8" CURB, TYPE A1-8 PER SPPWC STD. PLAN 120-2.
- 21 CONSTRUCT 8" CURB AND GUTTER, TYPE A2-8 PER SPPWC STD. PLAN 120-2.
- 22 CONSTRUCT DRIVEWAY APPROACH, PER SPPWC STD. PLAN 110-2, TYPE C.
- 23 CONSTRUCT CURB RAMP, PER SPPWC STD. PLAN 111-5.
- 24 INSTALL TRUNCATED DOMES.
- 25 REMOVE EXISTING SIDEWALK AND DRIVEWAY, CONSTRUCT SIDEWALK PER PER SPPWC STD. PLAN 113-2.
- 26 SAWCUT FULL DEPTH AND REPLACE EXISTING PAVEMENT IN-KIND.

DRAINAGE CONSTRUCTION NOTES

- 31 INSTALL 24" X 24" PRECAST CATCHBASIN WITH TRAFFIC RATED GRATE.
- 32 INSTALL 36" X 36" PRECAST CATCHBASIN WITH TRAFFIC RATED GRATE.
- 33 INSTALL 48" PRECAST STORM DRAIN MANHOLE.
- 34 INSTALL 48" PRECAST STORM DRAIN MANHOLE WITH SUMP PUMPS.
- 35 INSTALL 12" PVC STORM DRAIN PIPE.
- 36 INSTALL 18" PVC STORM DRAIN PIPE.
- 37 INSTALL 24" PVC STORM DRAIN PIPE.
- 38 INSTALL UNDERGROUND DETENTION SYSTEM BY STORMTECH.
- 39 INSTALL UNDERGROUND MODULAR WETLAND SYSTEM.
- 40 PARKWAY CULVERT "TYPE-B" PER CITY STD. PLAN. NO. 319, WITH CASE II INLET.
- 41 4" BUILDING ROOF DRAIN, SEE PLUMBING PLAN FOR CONTINUATION.
- 42 4" BUILDING ROOF DRAIN OVERFLOW, OUTLET 6" ABOVE FINISHED GRADE.
- 43 INSTALL 2" PVC FORCEMAIN.



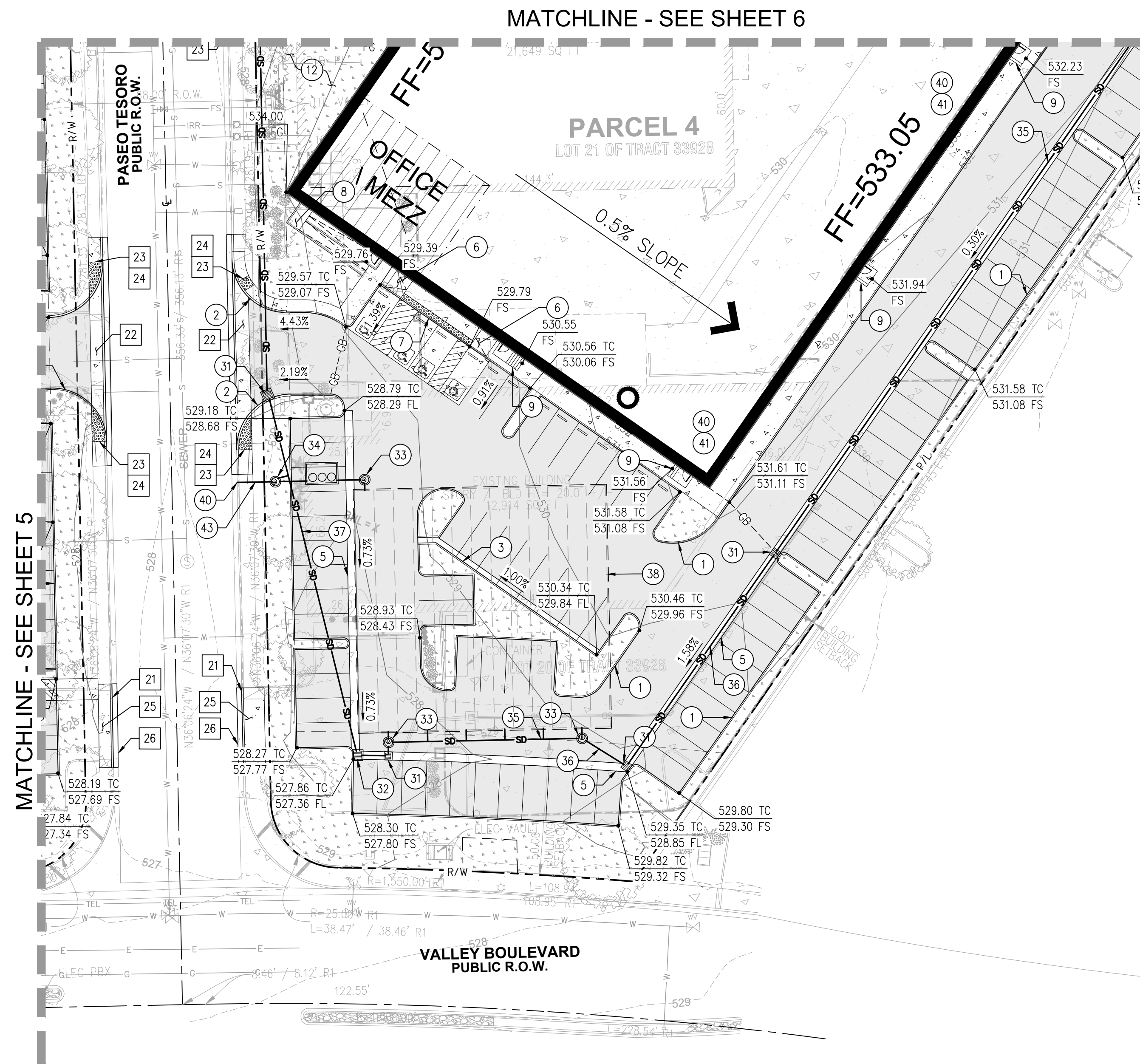
DATE	REVISIONS	BY

WALNUT BUSINESS PARK
 CITY OF WALNUT
 COUNTY OF LOS ANGELES
 PRELIMINARY
 GRADING & DRAINAGE PLAN - 5

PROJECT NUMBER: 22-136
PREPARED ON:
REVISED ON: 6/16/23
PREPARED BY: GMH
CHECKED BY: THJ
SHEET 6 OF 12

THE CONTRACTOR SHALL VERIFY AND BE RESPONSIBLE FOR ALL DIMENSIONS. DO NOT SCALE THE DRAWING - ANY ERRORS OR OMISSIONS SHALL BE REPORTED TO ATLAS CIVIL DESIGN WITHOUT DELAY. THE COPYRIGHTS TO ALL DESIGNS AND DRAWINGS ARE THE PROPERTY OF ATLAS CIVIL DESIGN. REPRODUCTION OR USE FOR ANY PURPOSE OTHER THAN THAT AUTHORIZED BY ATLAS CIVIL DESIGN IS FORBIDDEN.

3:\2022\22-136 WALNUT BUSINESS PARK\CAD\DWG\PRELIMINARY IMPROVEMENT PLANS\22-136 2 PRELIMINARY GRADING & DRAINAGE PLANS.DWG - PLOT DATE: June 16, 2023



CONSTRUCTION NOTES

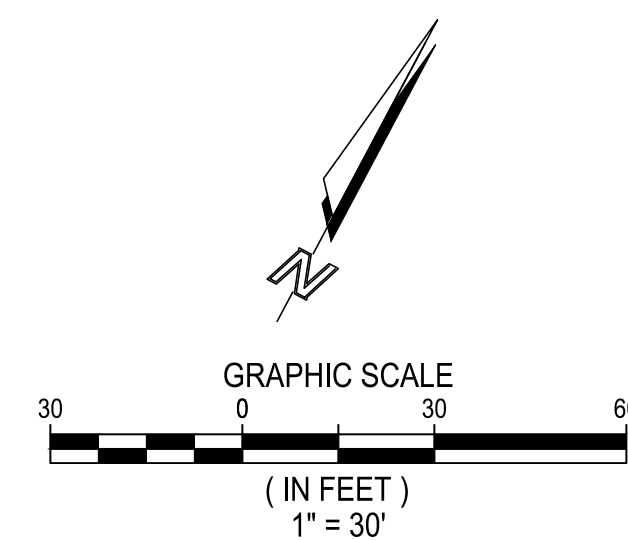
- 1 CONSTRUCT 6" CURB, TYPE A1-6 PER SPPWC STD. PLAN 120-2.
- 2 CONSTRUCT 8" CURB, TYPE A1-8 PER SPPWC STD. PLAN 120-2.
- 3 CONSTRUCT 6" CURB AND GUTTER, TYPE A2-6 PER SPPWC STD. PLAN 120-2.
- 4 CONSTRUCT 8" CURB AND GUTTER, TYPE A2-8 PER SPPWC STD. PLAN 120-2.
- 5 CONSTRUCT 36" WIDE RIBBON GUTTER.
- 6 CONSTRUCT CURB RAMP, PER SPPWC STD. PLAN 111-5.
- 7 INSTALL TRUNCATED DOMES.
- 8 CONSTRUCT ADA ACCESSIBLE RAMP WITH HANDRAILS.
- 9 CONSTRUCT CONCRETE STAIRS PER ARCHITECTURAL PLAN.
- 10 INSTALL BOLLARDS.
- 11 INSTALL CONCRETE WHEEL STOP.
- 12 INSTALL LANDSCAPING PER LANDSCAPE PLAN.

CONSTRUCTION NOTES - OFFSITE

- 20 CONSTRUCT 8" CURB, TYPE A1-8 PER SPPWC STD. PLAN 120-2.
- 21 CONSTRUCT 8" CURB AND GUTTER, TYPE A2-8 PER SPPWC STD. PLAN 120-2.
- 22 CONSTRUCT DRIVEWAY APPROACH, PER SPPWC STD. PLAN 110-2, TYPE C.
- 23 CONSTRUCT CURB RAMP, PER SPPWC STD. PLAN 111-5.
- 24 INSTALL TRUNCATED DOMES.
- 25 REMOVE EXISTING SIDEWALK AND DRIVEWAY. CONSTRUCT SIDEWALK PER PER SPPWC STD. PLAN 113-2.
- 26 SAWCUT FULL DEPTH AND REPLACE EXISTING PAVEMENT IN-KIND.

DRAINAGE CONSTRUCTION NOTES

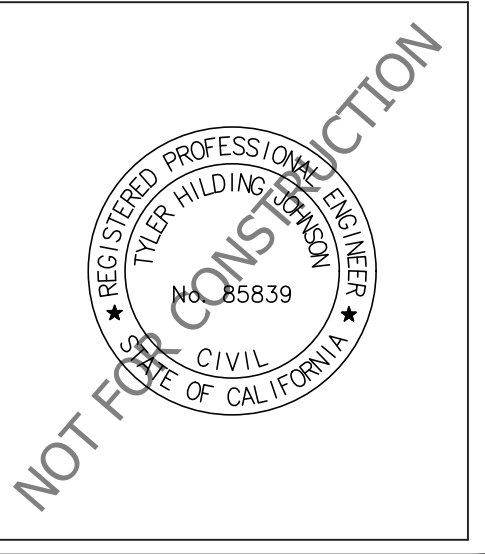
- 31 INSTALL 24" X 24" PRECAST CATCHBASIN WITH TRAFFIC RATED GRATE.
- 32 INSTALL 36" X 36" PRECAST CATCHBASIN WITH TRAFFIC RATED GRATE.
- 33 INSTALL 48" PRECAST STORM DRAIN MANHOLE.
- 34 INSTALL 48" PRECAST STORM DRAIN MANHOLE WITH SUMP PUMPS.
- 35 INSTALL 12" PVC STORM DRAIN PIPE.
- 36 INSTALL 18" PVC STORM DRAIN PIPE.
- 37 INSTALL 24" PVC STORM DRAIN PIPE.
- 38 INSTALL UNDERGROUND DETENTION SYSTEM BY STORMTECH.
- 39 INSTALL UNDERGROUND MODULAR WETLAND SYSTEM.
- 40 PARKWAY CULVERT "TYPE-B" PER CITY STD. PLAN. NO. 319, WITH CASE II INLET.
- 41 4" BUILDING ROOF DRAIN, SEE PLUMBING PLAN FOR CONTINUATION.
- 42 4" BUILDING ROOF DRAIN OVERFLOW, OUTLET 6" ABOVE FINISHED GRADE.
- 43 INSTALL 2" PVC FORCEMAIN.



ATLAS CIVIL DESIGN

Civil Engineering • Site Optimization
www.AtlasCivilDesign.com
Tel: 1-213-810-8470

San Diego • Orange County • Los Angeles • San Luis Obispo • Monterey



DATE	REVISIONS	BY

WALNUT BUSINESS PARK
CITY OF WALNUT
COUNTY OF LOS ANGELES
PRELIMINARY
GRADING & DRAINAGE PLAN - 6

PROJECT NUMBER: 22-136
PREPARED ON:
REVISED ON: 6/16/23
PREPARED BY: GMH
CHECKED BY: THJ
SHEET 7 OF 12

THE CONTRACTOR SHALL VERIFY AND BE RESPONSIBLE FOR ALL DIMENSIONS. DO NOT SCALE THE DRAWING - ANY ERRORS OR OMISSIONS SHALL BE REPORTED TO ATLAS CIVIL DESIGN WITHOUT DELAY. THE COPYRIGHTS TO ALL DESIGNS AND DRAWINGS ARE THE PROPERTY OF ATLAS CIVIL DESIGN. REPRODUCTION OR USE FOR ANY PURPOSE OTHER THAN THAT AUTHORIZED BY ATLAS CIVIL DESIGN IS FORBIDDEN.